

Partnership Prospectus

Join us to support eye and vision research that prevents and treats disorders and discovers new knowledge - in partnership with RANZCO and our stakeholders.





Australian Vision Research 70 years supporting eye health

Australia Vision Research began its journey as the Ophthalmic Research Institute of Australia in 1953 when a group of enterprising ophthalmologists got together with the purpose of encouraging and giving financial support to research into the causes of the diseases of the eye. The entity has been providing valuable funds and supporting the community ever since.

One of the Australian Vision Research founders and benefactors was Dame Ida Mann, DBE. Dame Ida Mann was a distinguished ophthalmologist whose long-term association with Australia began when she moved from England to Perth, Western Australia after World War II.

She diagnosed a trachoma epidemic amongst indigenous people in the Kimberleys and travelled extensively in Western Australia in order to examine and treat indigenous people with trachoma. She was appointed as Dame Commander of the Order of the British Empire on 14 June 1980 for services to the welfare of Aboriginal people.

Since our inception, we have been led by some of the most notable ophthalmic specialists in Australia and have partnerships and connections to key stakeholders and peak bodies in Australia and around the world. With the support of our members, donors and sponsors we will continue to support ophthalmic research in Australia.

Alignment



Our Vision.

We seek to alleviate the burden from blindness and vision impairment through research that discovers new knowledge and improves patient outcomes and clinical practice.

Our Mission.

We support eye and vision research that prevents and treats disorders and discovers new knowledge in partnership with RANZCO and our stakeholders.



Partnership

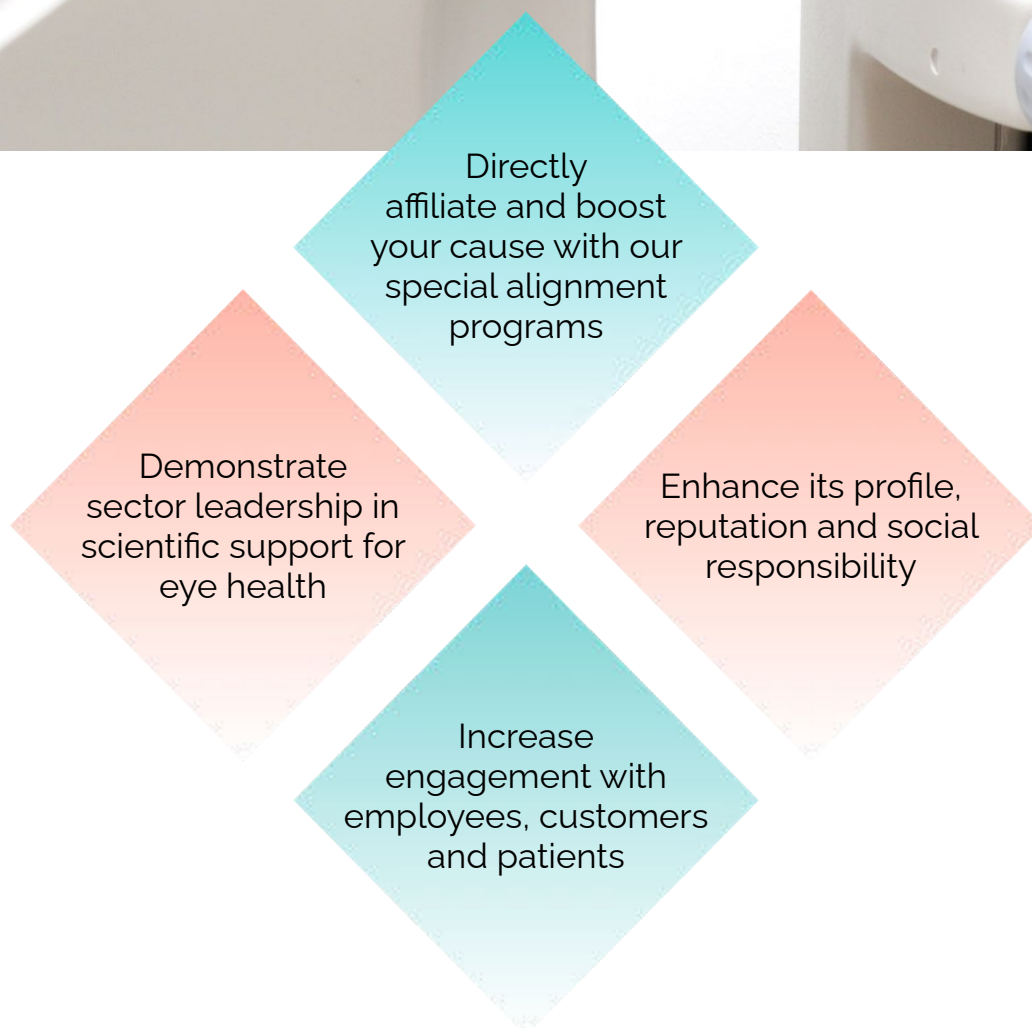
We value your interest in partnering with Australian Vision Research.

Our partners are passionate about supporting the prevention of blindness and vision impairment and enhancing the ophthalmic medical practice, nationally and beyond.

A partnership with Australian Vision Research showcases your organisation's commitment to ensure the advancement of critical medical eye research that benefits Australians and the world.

Australian Vision Research boasts a highly engaged membership of approximately 1,000 ophthalmologists.

Through a partnership with Australian Vision Research, your organisation can:



Special Alignment Programs

Australian Vision Research provides numerous opportunities for partnership, including our special alignment programs:



Special Alignment Program	Details
New investigators	In support of lead researchers in the early stages of their clinical-research career.
Women Scientists	In support of projects that are led and run by a team of female investigators.
Indigenous health advancement	In support of projects that directly benefit indigenous communities.
Regional research	In support of research undertaken in designated regional areas of Australia.

We welcome partnerships with:

Companies

Not for profit organisations

Trusts and foundations

Universities and research institutes

Individual supporters

Government entities

Partnership Tiers

Tier	Contribution Bracket per annum	Description	Partnership Benefits
Donation Sponsor	\$2,000 to \$5,000	Donate directly to AVR or sponsor an AVR donation point card payment device at your clinic, office or other high traffic location.	<ul style="list-style-type: none"> • Recognition in member newsletter • Recognition on website
Scientist Sponsor - Domestic travel	\$2,000 to \$5,000	Propel scientists to release their breakthroughs by funding domestic travel grants for trainees and new researchers to deliver a presentation at the RANZCO Scientific conference.	<ul style="list-style-type: none"> • Recognition on member newsletter • Recognition on website
Scientist Sponsor - International travel	\$5,000 to \$10,000	Propel scientists to release their breakthroughs by funding international travel grants for trainees and new researchers to deliver a presentation at international scientific gatherings.	<ul style="list-style-type: none"> • As above • Mention in researcher's presentations and publications
Strategic Partner	\$10,000 to \$50,000	Donate directly to AVR and empower us to support the work of researchers and scientists.	<ul style="list-style-type: none"> • As above • Receive a report upon research completion • Recognition at AGM • Recognition in annual report
Leading Partner	\$50,000 to \$100,000	Fund a research project for a year by supporting a team of scientists.	<ul style="list-style-type: none"> • As above • Grant naming rights • Special profile article in member newsletter
Enterprise Partner	\$100,000 +	Become an Enterprise scientist champion over a multiyear commitment (3yrs).	<ul style="list-style-type: none"> • As above • Sponsor AVR plenary sessions • Brand display at the AVR's booth • Brand display on AVR's grants portal



Contact us

We would love to discuss
your partnership interest.

Phillip Cenere, CEO

M: 0415 124 877

E: ceo@australianvisionresearch.org

W: australianvisionresearch.org

The Ophthalmic Research Institute of Australia trading as Australian Vision Research
ABN 37 008 393 146.